

NJMC Municipal Mapping Resources

2013 SUMMER TRAINING SESSIONS

Sessions will be held at the Meadowlands Environment Center ITV Room on the following days:

Monday, July 29, from 9 AM to 12 PM • Monday, August 19, from 9 AM to 12 PM • Monday, September 16, from 9 AM to 12 PM

Tax Assessors, Zoning and Building Officials, Property Data Managers

Use our maps to manage municipal assets. Data stored on every property in your town includes owner, block and lot, easements, address, zoning and land use, acreage, and building footprint. For instance, save time by generating property boundaries utilizing a buffer tool to identify property owners who need to be notified for variance requests.

Emergency Responders

Find critical data at the click of a button that can help you prepare for and combat emergencies, including precise information on hazardous materials stored in warehouses, contact information for property owners, fire hydrant locations and turn-around space for heavy equipment.

Tide Gates & Visualization

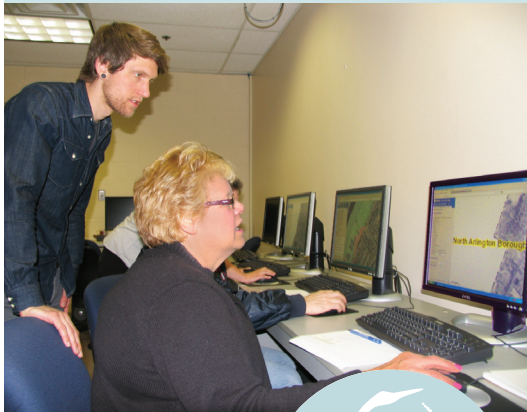
Keep an eye on Hackensack River water levels. Sign up for email and text alerts sent when water level readings in the District are 5.5 feet or higher. Serious flooding occurs when water levels reach 7 feet. Subscribe to alerts at <http://meri.njmeadowlands.gov/alerts/water-level>. View sea surge inundation maps ranging from 2-feet to 8-feet above sea level during storm events.

GPS Surveying & Utility Data Collection

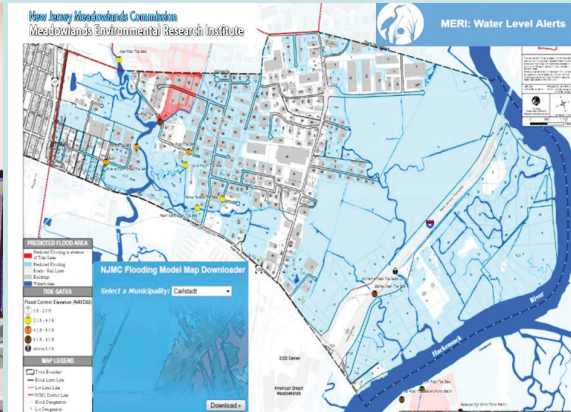
Learn how to use GPS systems to collect data for your town. Map your community's wastewater and storm water systems, tree inventory, and other infrastructure. NJMC GPS equipment is available for loan and staff is available to help you get started.

Training is free for NJMC District Municipality Officials

Training on District town maps



Water level alerts



GPS surveying



Data and map exchange



New Jersey Meadowlands Commission

MEADOWLANDS ENVIRONMENTAL RESEARCH INSTITUTE

Space is limited. Please contact Sandy Speers at 201-460-2800 or Sandy.Speers@njmeadowlands.gov to reserve space.

For more information on the training topics listed or for general GIS inquiries, please contact Dom Elefante, GIS Program Administrator at dominador.elefante@njmeadowlands.gov or 201.460.4669.

One DeKorte Park Plaza • Lyndhurst, NJ • 07071 • meri.njmeadowlands.gov