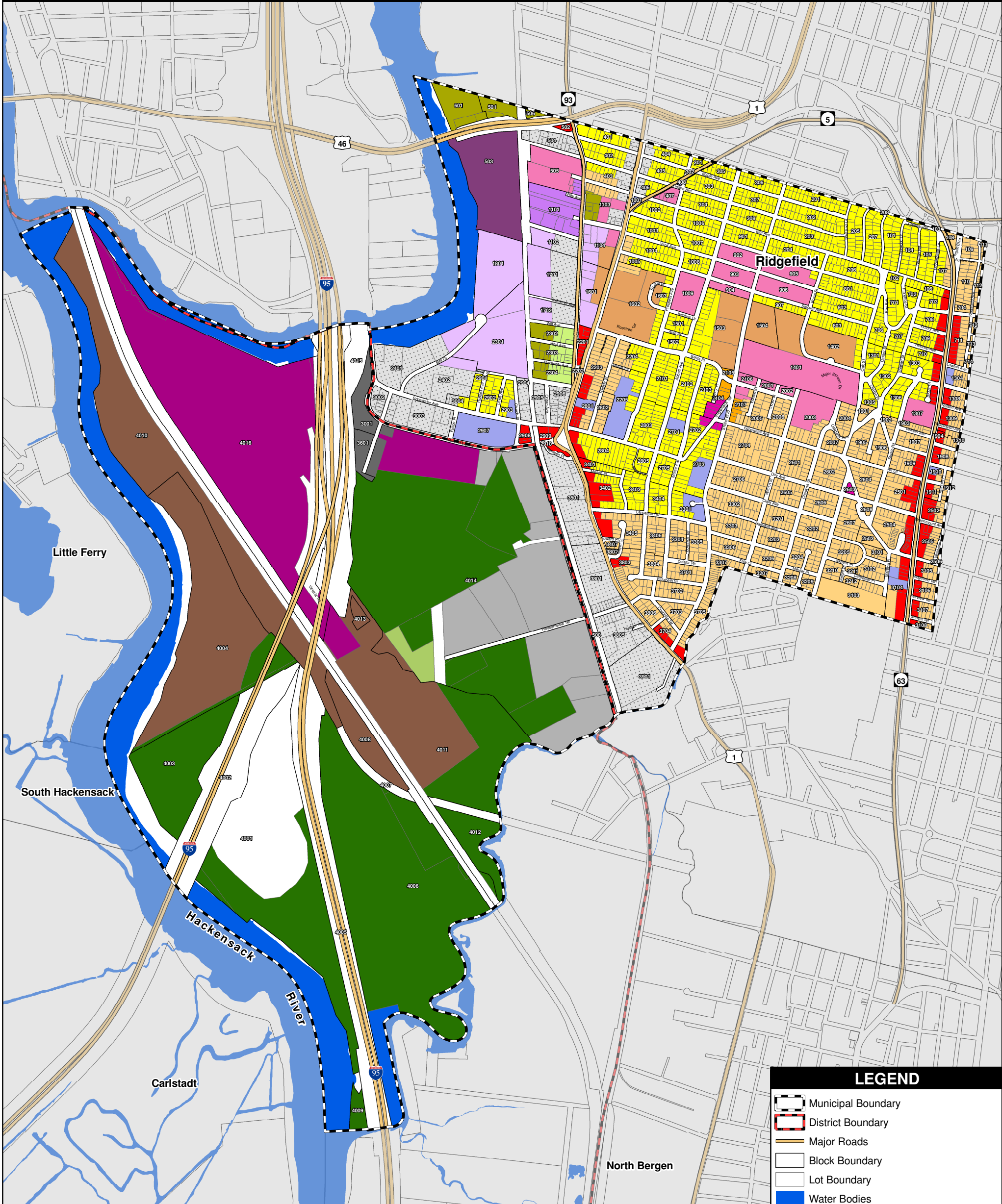


Borough of Ridgefield Zoning Map



MEADOWLANDS DISTRICT ZONES

- | | |
|---------------------------------|---------------------------|
| Environmental Conservation (EC) | Parks and Recreation (PA) |
| Heavy Industrial (HI) | Public Utilities (PU) |
| Intermodal B (IB) | Roads, Rails, ROWs (RRR) |
| Light Industrial B (LIB) | Water (WAT) |

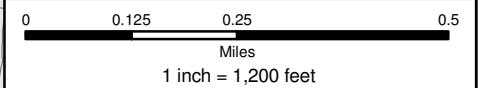
RIDGEFIELD ZONES

- | | |
|--------------------------------------|------------------------------------|
| Commercial (C) | Office Mid Rise (OMR) |
| Commercial / High Rise Hotel (C/HRH) | Office Mid Rise Hotel (OMRH) |
| GA/TH Cluster (GA/TH) | One Family Residential (OFR) |
| Light Manufacturing (LM) | Public / Semi Public (P/SP) |
| Neighborhood Business (NB) | TH / SR Citizens Housing (TH/SRCH) |
| Office / T.H. (O/TH) | Townhomes (T) |
| Office Commercial (OC) | Two Family Residential (TFR) |

LEGEND

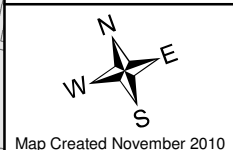
- Municipal Boundary
- District Boundary
- Major Roads
- Block Boundary
- Lot Boundary
- Water Bodies

Units: US Survey Feet
Datum: North American Datum 1983
Coordinate System: NJ State Plane
Data Source(s): NJMC GIS, Borough of Ridgefield



Disclaimer:
 This map was created using New Jersey Meadowlands Commission Geographic Information System digital data. The information provided on this map are provided "as is" with no warranty of any kind. This is neither an official state map nor state authorized; it is for information and representation purposes only.

Parcel configurations on this map reflect lot lines taken from municipal tax maps. Some areas may not show current subdivisions. For further information, please contact the office of the NJMC.



Map Created November 2010